

📍 Life Camp, **Abuja**

IMPERIAL VISTA

by Hall7 Real Estate

0809 444 8555

www.hall7projects.com

INTRODUCTION

Hall7 is a lifestyle Real Estate Development Company with over One (1) million square foot of completed luxury projects across the Federal capital city, Abuja. At the heart of Hall7 Real Estate's culture lies the desire to deliver value to our customers.

Our developments are delivered to the highest standards possible, exceeding the expectations of our customers. Our constant quest to be extraordinary is what has inspired Hall7 Real Estate to go beyond providing quality projects but also offering Investment Advisory services that ensure sustained return on investment.

We provide cutting edge designs and a global perspective based construction that allow us to deliver across the value chain of the construction industry.





LUXURY | COMFORT | VALUE



IMPERIAL
VISTA

IMPERIAL VISTA

Envisaged as a premium lifestyle community, Imperial Vista is a new icon in the city; the development is a joint venture between Hall7 and Nigerian National Petroleum Corporation Abuja Cooperative. Imperial Vista is a development with a series of unique neighborhoods set on prime land, spanning over 11 hectares nestled with nature.



Hall 7 Real Estate -
Brookshore Residence

HALL7PROJECTS.COM / +234 809 444 8555

ESTATE



Imperial Vista

Stella Maris College



Cornerview plaza abuja

ADDRESS

Plot 58, Cadastral Zone 05.
Kafe District, Life Camp, Abjua.

Abuja

IDOGWARI

Obafemi Awolowo Way

Zuba Garki Rd

Zuba Garki Rd

GWARINPA

Ring Road

Ahmadu Bello Way

Ahmadu Bello Way

Paichellimodu Ave

Tai Solarin Ave

Baka
Pharm



12th Cres

Shoprite J

JABI

Alex Ekwueme Way



CUBIQ DUPLEX

CUBIQ DUPLEX

This elegantly designed edifice, stands as an epitome of lifestyle living. This fully detached duplex features are seven bedrooms, with two living rooms, a two-car parking garage, a kitchen and dining with ample space and a swimming pool that grants you a resort like experience in the comfort of your own home.



7 BEDROOMS



2 CAR GARAGE



2 LIVING ROOMS



FIBRE-TO-THE HOME



DINING ROOM



PANTRY



MORDERN
KITCHEN



STUDY







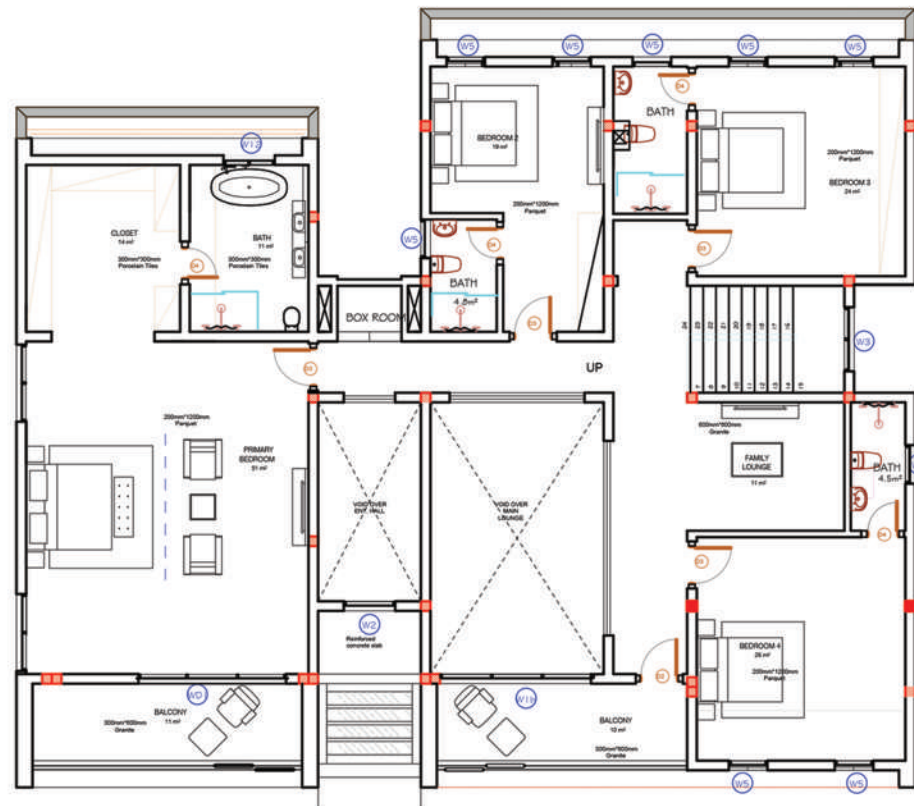
FLOOR PLANS



GROUND FLOOR PLAN

231.9 m² Footprint

550 m² Plot



FIRST FLOOR PLAN

315.6 m²



ARROWHEAD DUPLEX

ARROWHEAD DUPLEX

This elaborately layered and inviting arrowhead styled homes are a tease to the senses with an extraordinary first of it's kind in architectural design. Some of the units offer a basement fit for a game room or cinema, a mini gym, or just for that extra space.



4 BEDROOMS



2 LIVING ROOMS



DINING ROOM



MORDERN
KITCHEN



4 CAR PARKING



FIBRE-TO-THE HOME



PANTRY



STUDY NOOK







FLOOR PLANS





First Floor Plan



HEXAGONAL COURTYARD



HEXAGONAL COURTYARD

At the heart of Hall7 real estate's culture lies the desire to deliver value to our customers. From the selection of development partners to delivery, the company keeps its promise to ensure quality in detail thereby providing luxury, comfort and value which is common to all our developments.



4 BEDROOMS



2 CAR PARKING



2 LIVING ROOMS



FIBRE-TO-THE HOME



DINING ROOM



PANTRY

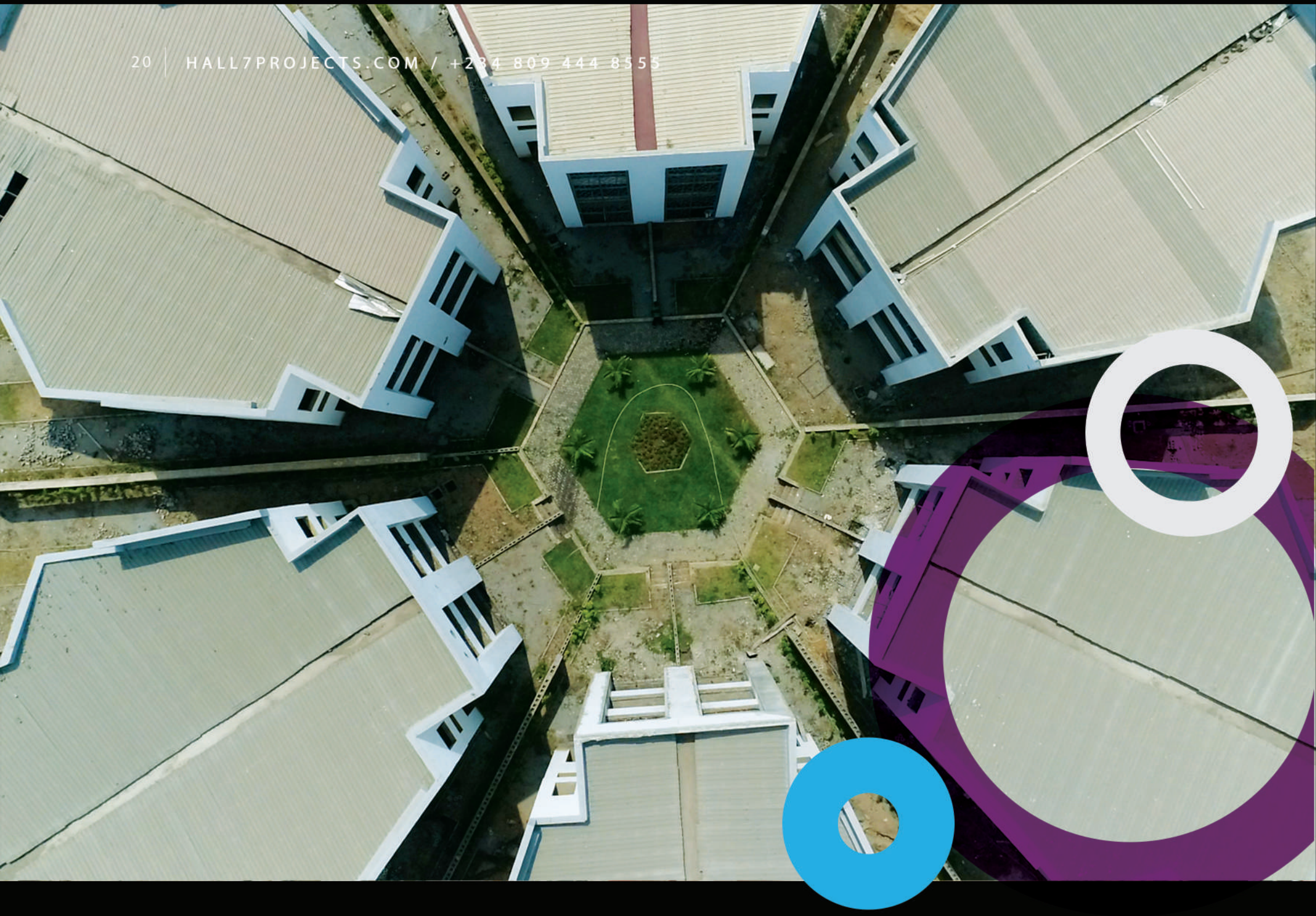


MORDERN
KITCHEN



STUDY



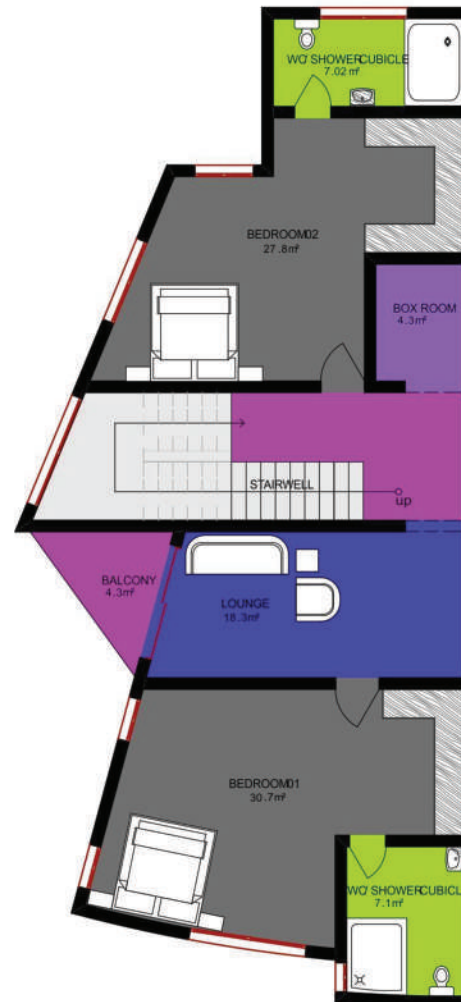




FLOOR PLANS

Ground Floor Plan





Frist Floor Plan

FLOOR PLANS



Second Floor Plan



SOLD

PEAKED TERRACE

PEAKED TERRACE

This contemporary classic building is designed for creating memories that will last a lifetime. With an impressive façade the straight terraces features a three bedroom all en-suite duplex with a one bedroom boys quarters and an ample parking space that can take up to three cars.



4 BEDROOMS



2 CAR PARKING



1 LIVING ROOM



FIBRE-TO-THE HOME



DINING ROOM



PANTRY



MORDERN
KITCHEN







FLOOR PLANS



GROUND FLOOR PLAN
184.8m² FOOT PRINT



FIRST FLOOR PLAN

114.3m²



COMMUNITY CENTER

Parks and recreation facility is a valuable investment for any city, town or community with a vast array of health benefits for its people. They don't just build the physical or mental health; they also build social health. The social bonds that people enjoy create a stronger, safer and more civic living condition.



MAZE GARDEN



SUNKEN GARDEN



INDOOR GAME



TENNIS
COURT



SWIMMING POOL



BASKETBALL COURT



MINI FOOTBALL
PITCH

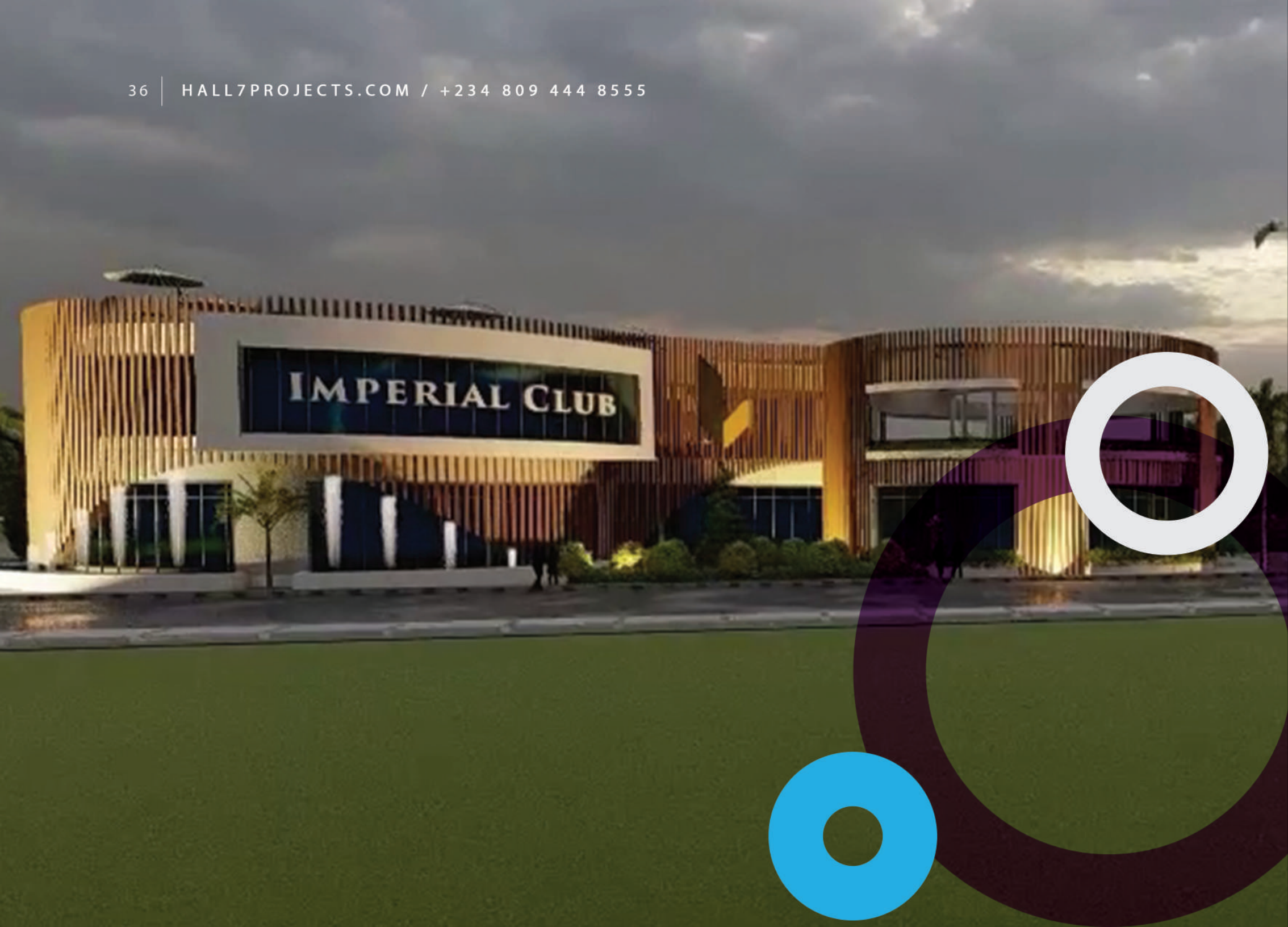


CHAPEL AND MOSQUE











EXECUTED PROJECTS

THE BRIDGE

■ APARTMENTS & TOWN HOUSES ■

NO OF UNITS - 47

📍 IDU, ABUJA





BROOK SHORE

RESIDENCE

NO OF UNITS - 236
📍 KARSANA, ABUJA





WOULD YOU LIKE TO GO ON AN EXCLUSIVE TOUR OF OUR OTHER PROJECTS?

Book a tour

You can contact us for further enquiries
info@hall7projects.com
+234 809 444 8555

For more info, please visit our website :
www.hall7projects.com



PLEASE CONFIRM INVESTMENT AMOUNT BEFORE PAYMENT IS MADE. PRICES ARE EXCLUSIVE OF VAT.